



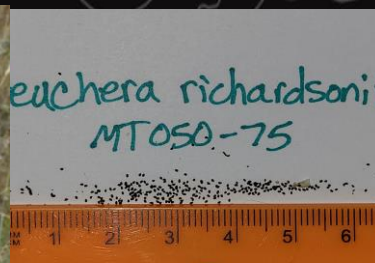
U.S. Department of the Interior
Bureau of Land Management

Seeds of Success in Restoring Native Habitat to Public Lands in Montana & the Dakotas

Presented by: Wendy Velman, MT/DKs BLM Botany Program Lead
January 15, 2024 Yellowstone Valley Audubon Society



SEEDS
OF
SUCCESS





U.S. Department of the Interior
Bureau of Land Management

BLM Seeds of Success

10 Field Office

6 Partners

Montana Dakotas Seeds of Success 2023

BLM State
Montana

Collector ID
No category selected

Species
No category selected

Data source
error

2023 Scouting Points

0

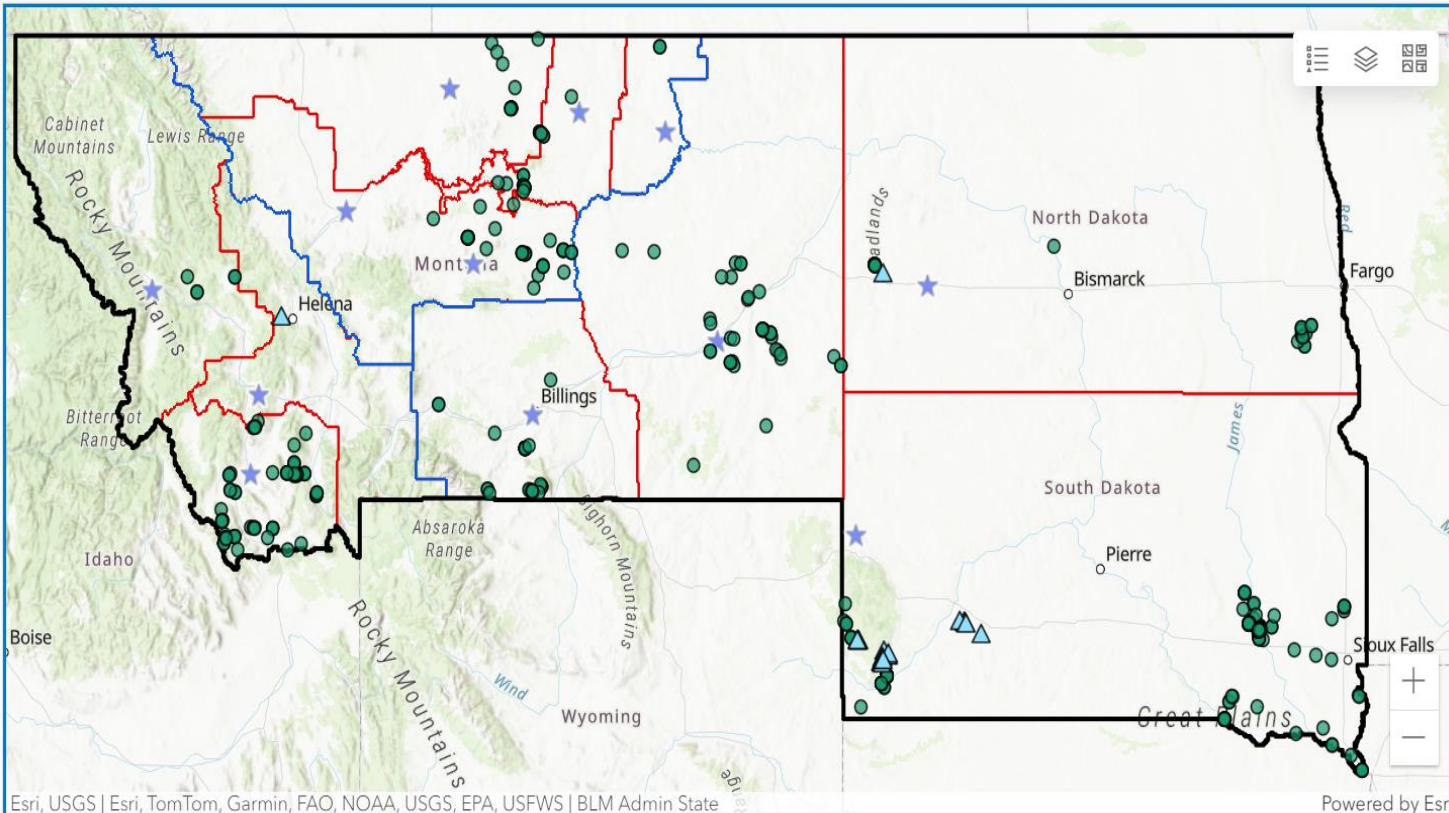
2000 - 2023 SCS Accretions

394

SCS Accretions to Boreal

30

As of June 2023



Legend

- 2023 Seed Collections
- 2023 Scouting
- 2023 Rescuing
- Historic Collections
- BLM State Bounds
- BLM District Bounds
- BLM Field Office Bounds
- BLM Office Location



U.S. Department of the Interior
Bureau of Land Management

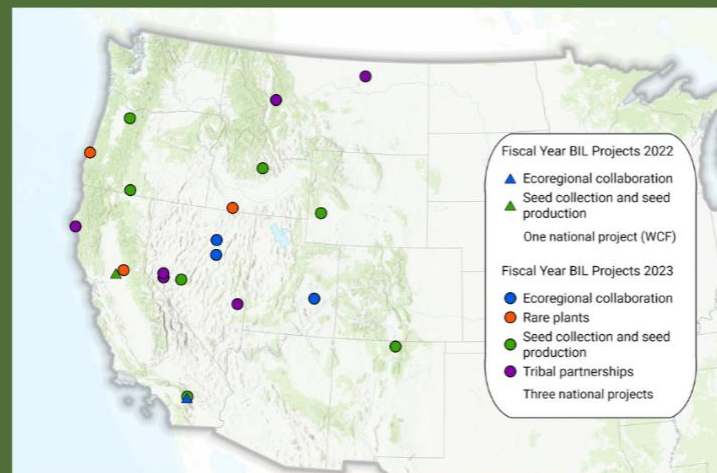
National Native Seed Strategy

The right seed in the right place at the right time.



National Seed Strategy Five-Year Business Plan Cost Estimates

Goal 1: Assess seed needs and ensure reliable availability	\$132 million
Goal 2: Conduct research	\$197 million
Goal 3: Develop tools for land managers	\$26 million
Goal 4: Ensure good communications	\$3 million



"The Bipartisan Infrastructure Law is a once-in-a-generation investment to help communities across the country tackle the climate crisis while creating good-paying jobs, addressing environmental justice, and boosting local economies."
-Secretary Deb Haaland

Standards for Native Seeds in Ecological Restoration



U.S. Department of the Interior
Bureau of Land Management

Partnerships in Restoration

Special K Ranch

Fort Belknap

Confederated Salish Kootenai Tribes/Missoula Field Office

Shoshone Bannock Tribes/Dillon Field Office

MT Dept. of Natural Resources



U.S. Department of the Interior
Bureau of Land Management

Special K Ranch

Partners since 2006





U.S. Department of the Interior
Bureau of Land Management

Seeds of Conservation Success: BLM/OSU/Fort Belknap Indian Community Grassland Restoration Project



OSU College of Forestry:
Cristina Eisenberg, PhD
Thomas H. DeLuca, PhD

BLM:
Marcia Pablo
Wendy Velman

Fort Belknap Indian Community:
Dennis Longknife, Jr



June 20, 2023



U.S. Department of the Interior
Bureau of Land Management

Synthesis of:

IK, working collaboratively with Native American ecologists, technicians, and students

BLM best science, such as Seeds of Success (SOS), Assessment, Inventory, and Monitoring (AIM)

SER standards for ecological restoration.

Values:

- Reciprocity
- Cultural humility
- 7th generation perspective



Best Western Science + IK + Social Justice = Healing the Earth



U.S. Department of the Interior
Bureau of Land Management

Confederated Salish Kootenai





U.S. Department of the Interior
Bureau of Land Management

Shoshone Bannock Tribes





U.S. Department of the Interior
Bureau of Land Management

Montana DNRC Conservation Seedling Nursery

2023 Partnership

- MT/ DKs Bureau of Land Management
 - Region 1 US Forest Service
 - Missoula County
 - Missoula City Parks and Recreation
 - Bitterroot Valley partners
 - Seed Growers
 - Native Plant Nurseries
-
- 2024 – looking to expand work into Eastern MT with USFWS and NPS BIL-BAR funding to include the Dakotas



Montana Plant Conservation Strategy

- 2018 - MT Native Plant Society appointed 4 Steering Committee members
- Core Team Members = Partnership of 23 federal, state, academic, and non-profit/NGO organizations and non-affiliated individuals.
- The Steering Committee identified approximately 30 organizations that are or could be supporting partners, such as, land trusts, federal and state agencies that manage land, timber companies, and other conservation organizations that have little expertise in rare plant or habitat conservation. Examples include The Montana Land Reliance, Bureau of Reclamation, Weyerhaeuser Timber Company, and The Wilderness Society.



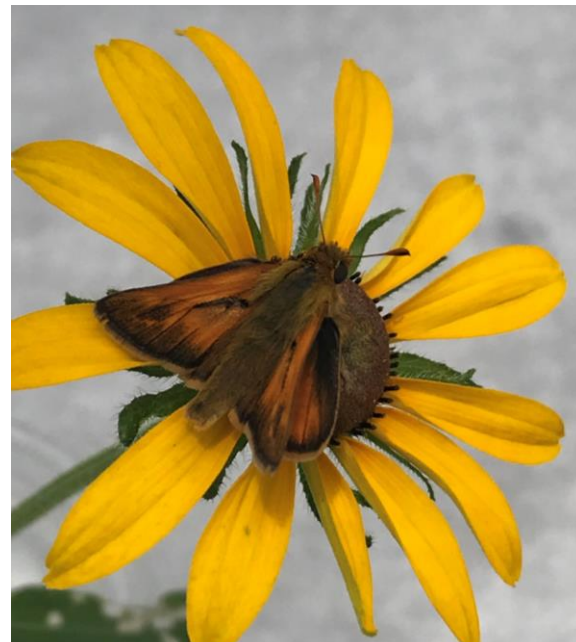
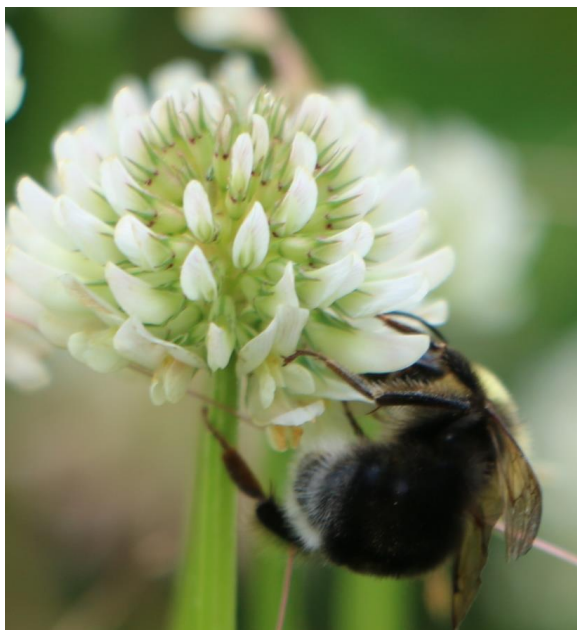
MT Plant Conservation Strategy

- **BACKGROUND**
- **TRIBAL ACKNOWLEDGMENT AND STATEMENT**
- **ROLE OF HERBARIA IN PLANT CONSERVATION**
- **ROLES AND IMPORTANCE OF NATIVE POLLINATOR PLANTS**
- **MONTANA'S VASCULAR PLANTS OF CONSERVATION CONCERN**
- **MONTANA'S SPECIALIZED HABITATS OF CONSERVATION CONCERN**
- **MONTANA'S PLANT COMMUNITIES OF CONSERVATION CONCERN**



Pollinator Conservation

- 2017 USFWS expressed potential of future listing of Bumblebees
- BLM/USGS cooperative Non-lethal collection pilot
 - Photo inventory – lead to publication
 - eDNA questions
 - Partnership with MN Zoo, USFWS, USFS



Thank You – THE END



Wendy Velman
wvelman@blm.gov
406-896-5032